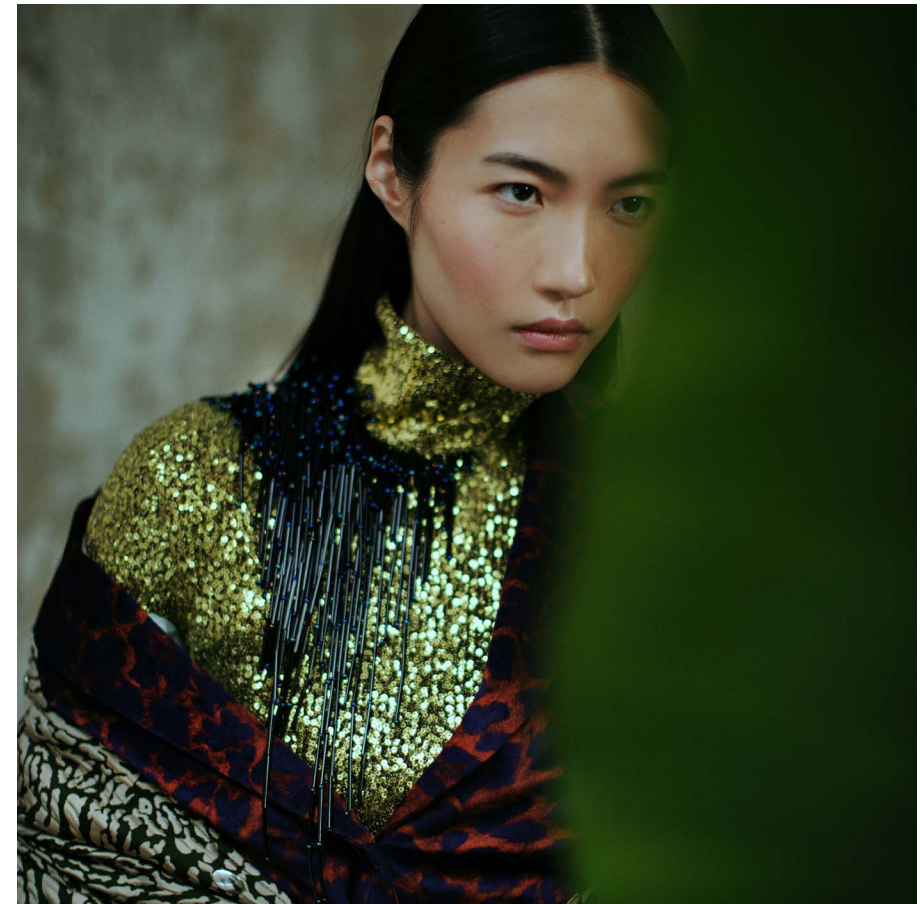


DAWID TOMASZEWSKI



AW 21-22



The latest collection "TRANSITION", the designer remains true to his elegant cuts and high-quality materials, as outstanding quality sequins and feathers. Swarovski crystals are giving an amazing touch to the latest collection which portrays women in their femininity, strength with unconventional charm.





Discover the world of DAWID TOMASZEWSKI where it is easy to get lost into the designs and fine craftsmanship dipped in elegant materials. His creativity and latest collection is littered with references and homages to great women of 80s and 90s.





Modern Silhouettes elevating it out of its vintage roots.



From bold patterned jacquard to sumptuous soft feathers and leather, these latest statement styles offer a contemporary update on the classic cover ups.





Artful bedding and pleating, sequins, appliques are some of the stand out styling details that are making an impact, transferring staple item into luxe layering pieces.



















Florals are often a symbol of beauty and change as they keep reinventing themselves in the accordances with the changing seasons.





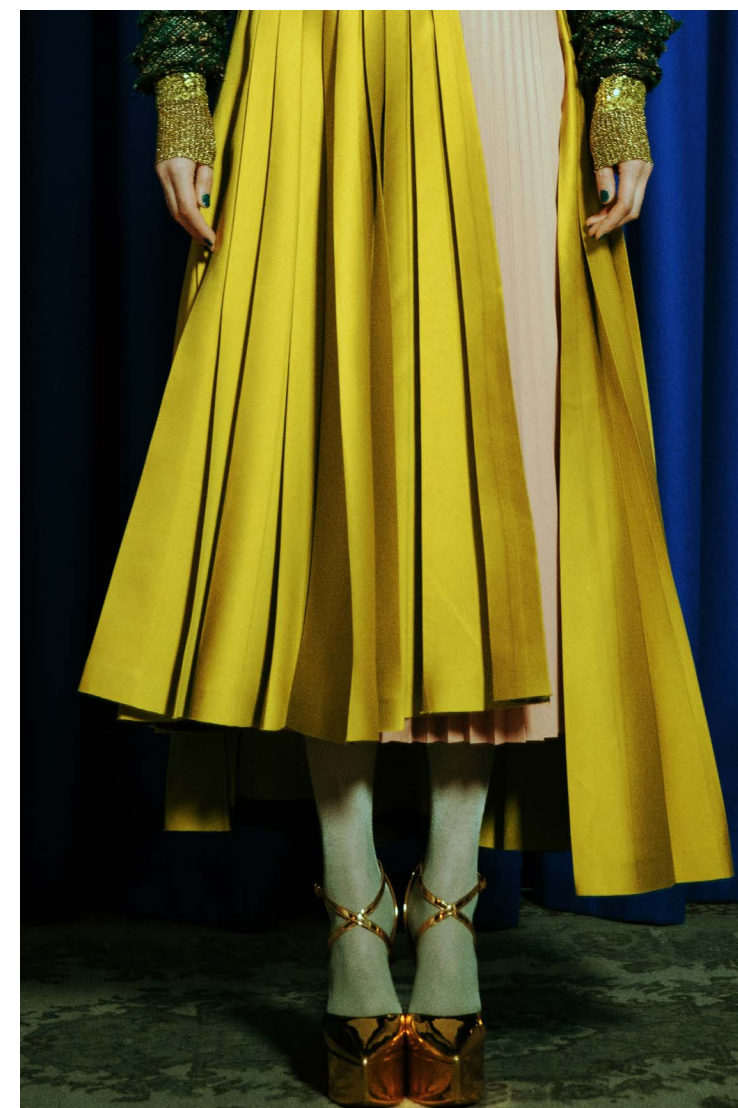




His creativity and latest collection is littered with references and homages to great women of 80s and 90s.















Playing with colors has always been an important point of consideration.





DAWID TOMASZEWSKI

DT CONCEPTS
RICHARD-WAGNER-STR. 25 - 10585 BERLIN
OFFICE: T +49 30 - 296 824 30
F +49 30 - 296 824 32

dawid@tomaszewski-concepts.com
info@dawidtomaszewski.com